



Product Overview

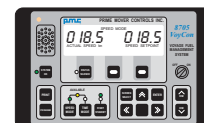
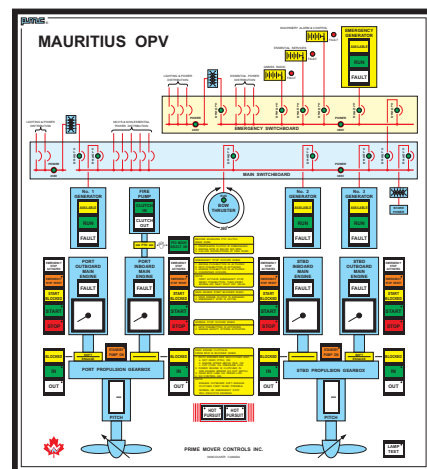
PMC designs, develops, manufacturers and services a wide range of products. Every product developed by PMC originated from an application need. For over thirty years PMC products have been setting new standards in quality and performance.

PRODUCT LIST

- Integrated Systems
- Consoles
- CP Propeller Controls
- Fixed Pitch Propeller Controls
- Azimuth Drive Controls
- Controls for Electronic Engines
- Auxiliary Machinery Controls
- Machinery Safety Systems
- Control Heads
- Electric Shaft Systems
- Actuators
- Pitch Controllers
- Alarm and Monitoring
- Tank Level Monitoring
- Propulsion Telegraphs
- Navigation Light Controls
- Pushbutton and Indicator Panels
- Hardwired Mimics
- Instrumentation
- Shaft RPM
- Pitch Position
- Fuel Rack Position
- Pneumatics
- Winch Controls
- Shaft Brakes

MARINE CONTROL and MONITORING PRODUCTS

"Customer satisfaction is the standard by which we measure our success."

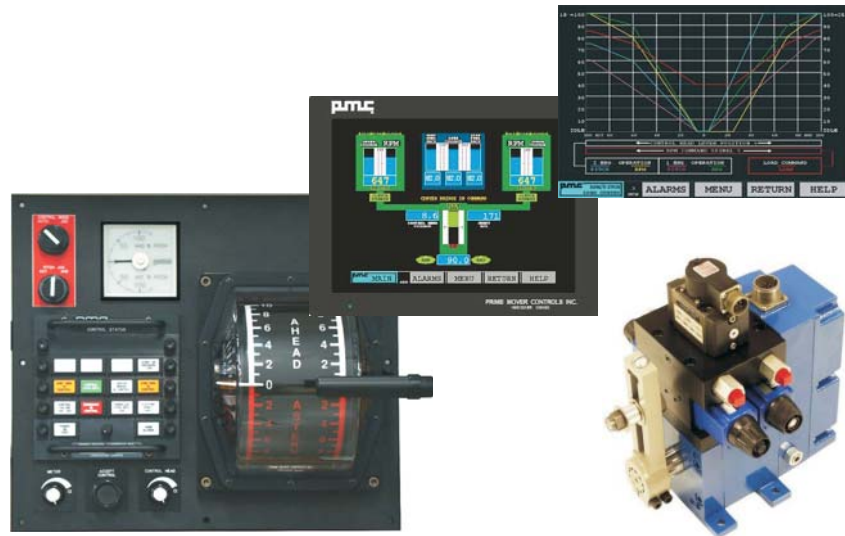


PRIME MOVER CONTROLS INC.

D-MaC Digital Marine Control

For CP Propellers

- Drop in propulsion control and instrumentation plates
- Speed control / load sharing
- Pitch control / load control
- Electric shaft control heads
- Power management for propulsion machinery
- Safety interlocks
- Redundant and fault tolerant control systems



MPC-D Marine Propulsion Control

Digital System

Electronic or electro-mechanical control for:

- Engines
- Gearboxes
- Trolling valves
- Shaft brakes
- Synchronizing
- Safety interlocks

Continuously monitored emergency backup for:

- Engine and gearbox control
- Control lever position sensing
- Communication lines
- Power sources

Multi-functional display and horn at each station provide:

- Station transfer
- System monitoring
- Keypad setup
- Self diagnostics
- Data logging



Z-MaC Azimuth Control

For Right Angle Drives

- Integrated propulsion and 360° rotation control
- Rotation can be limited for steering or jet drive applications
- Azimuth order telegraph
- Azimuth direction meters
- Bang-bang or servo control
- Safety interlocks
- Non follow-up alarms



IMACS Integrated Machinery, Alarm and Control

- Distributed analog and digital inputs or outputs
- Industry standard inputs
- Galvanically isolated inputs and outputs
- Stand alone alarm display
- Single or dual high speed network
- Standard or marine ruggedized workstation
- Event logging and trending
- Integration with controls
- Power management
- Communication gateways to other systems
- On-line self diagnostics
- Ship to shore data transfer and remote diagnostics



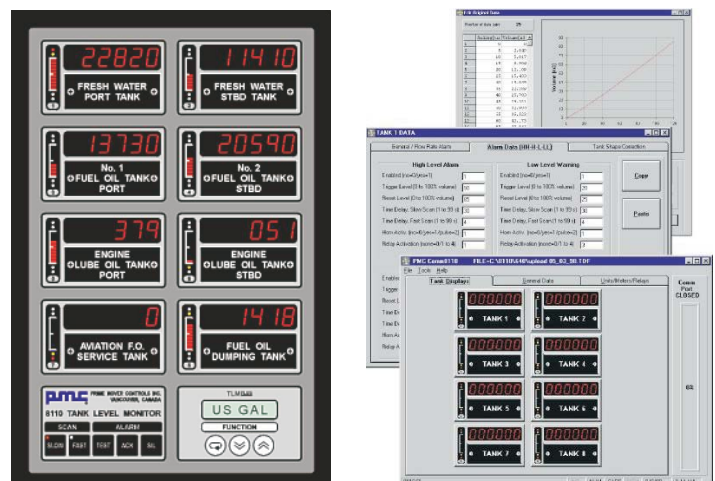
Alarm Annunciators

- Normally open, normally closed or normally open with end of line resistor digital inputs
- Group and single point repeaters
- First in alarms
- Alarm disable inputs
- Horn and beacon outputs
- Single point display
- LED or lamp back lighting
- Dimmable
- Serial network link to PMC alarm products
- Data logging



Tank Level Monitoring and Alarm

- Monitors eight tanks simultaneously
- Slow/fast scan for marine applications
- Vessel draft monitoring
- Uses low cost standard sensors
- Meter outputs for remote displays
- Control relay outputs
- Five set points and six alarms per tank
- Serial network link to PMC alarm products
- Easy programming with front LCD or computer
- Multiple methods to create tank shape correction tables



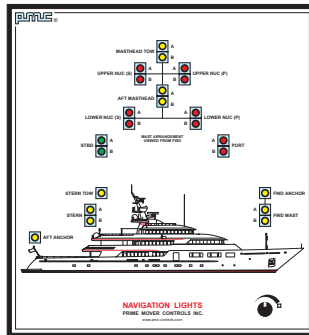
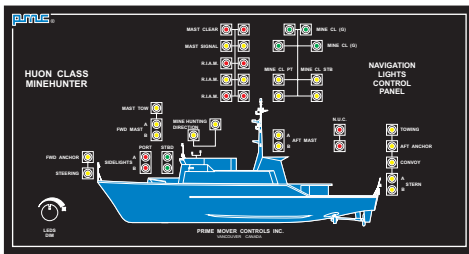
Propulsion Telegraphs

- Lever
- Pushbutton
- Azimuth
- Single or twin screw
- Separate standby group
- Wrong direction alarms
- Compact
- Watertight
- Serial network link
- Data logging
- Self diagnostics



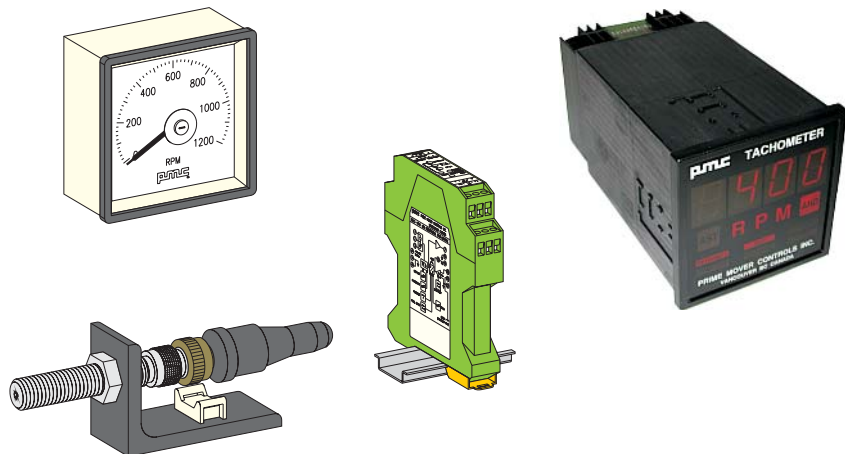
Navigation Light Controls

- Bulb, fuse and wire monitoring
- Dual fused input power source
- Auto transfer
- Group transfer
- Modular construction
- Mimics



Instrumentation

- Engine RPM
- Uni/bi directional shaft RPM
- Propeller pitch
- Signal conditioners
- Analog and digital dimmable meters
- Magnetic pickups
- Pitch transmitters
- Fuel rack transmitters
- Pressure sensors
- Temperature sensors
- Tank sensors



PRIME MOVER CONTROLS INC.

3600 GILMORE WAY, BURNABY BC CANADA V5G 4R8

CONTROLLED/GENERAL REFERENCE/0_GEN2_DWG/ISSB-0-2-0019R00.CDR TEL 604 433-4644 FAX 604 433-5570 www.pmc-controls.com

ALL RIGHTS RESERVED