



# Type 3310-2000

The Type PA-EH2 Valve Assembly is suitable for driving external differential cylinders.

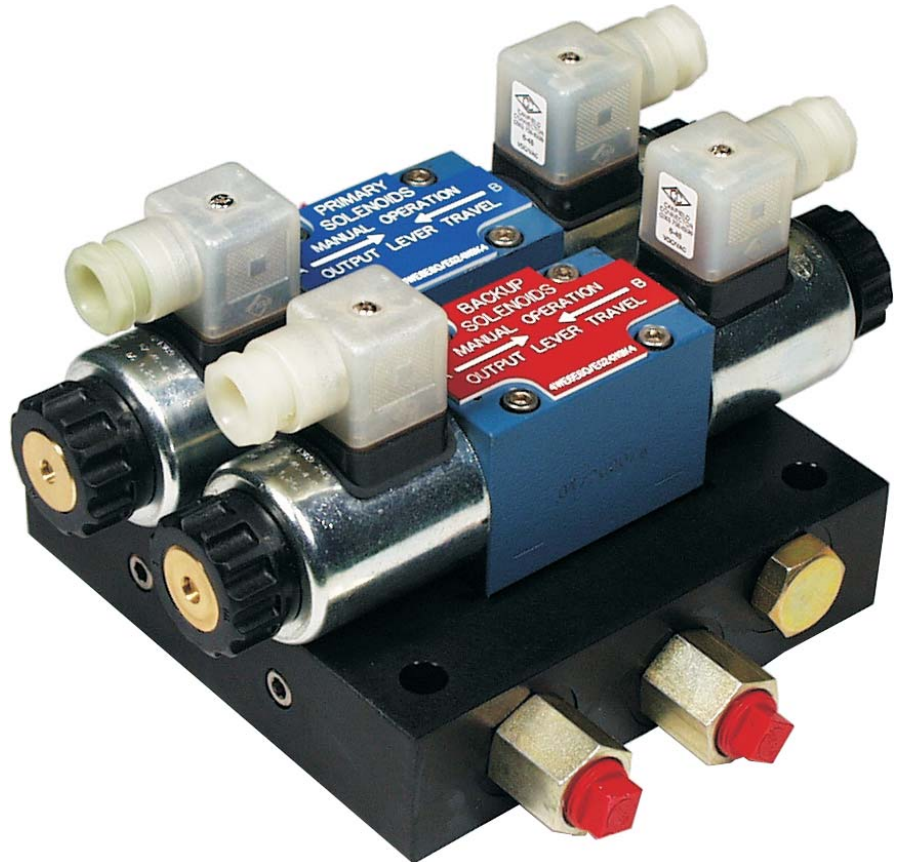
This allows the re-use of hydraulic pitch setting actuators on vessels that are upgrading to PMC's digital control system.

## FEATURES

- Primary and backup solenoids with manual override
- Hydraulic connections provided on both sides
- Indicating DIN connector
- Rugged construction with corrosion resistant materials
- Exceptional repeatability and accuracy
- Very low hysteresis
- Proven reliability and performance

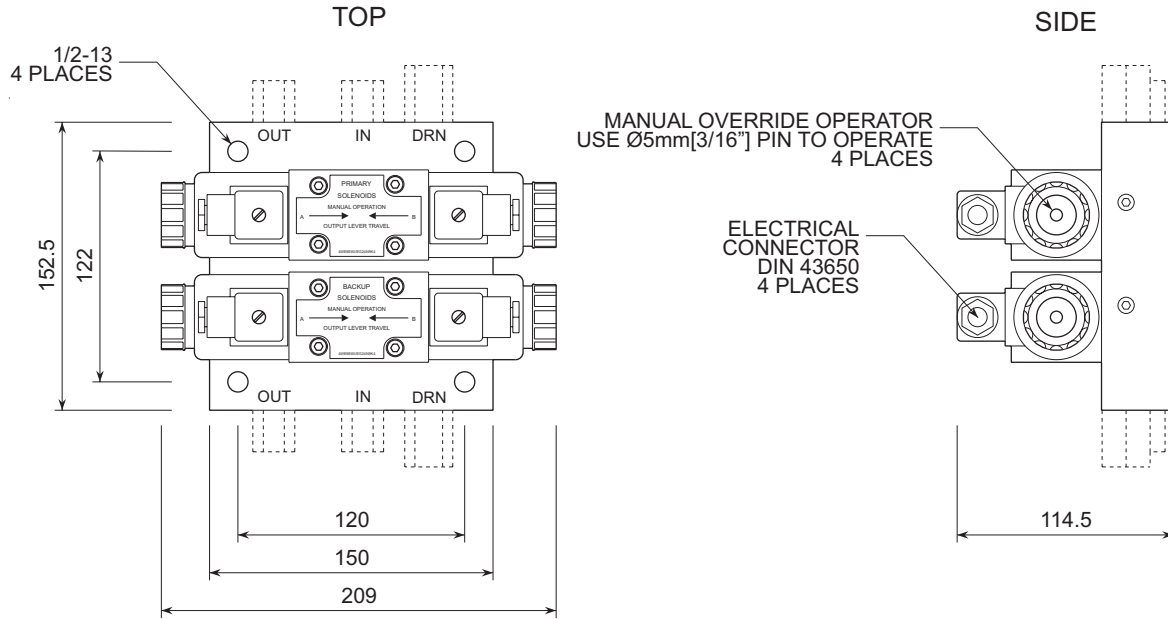
## DUAL ELECTRO-HYDRAULIC VALVE ASSEMBLY

MANIFOLD MOUNTED  
REDUNDANT SOLENOID VALVES  
WITH MANUAL OVERRIDES



**PRIME MOVER CONTROLS INC.**

## DIMENSIONS FOR 3310-2000 DUAL ELECTRO-HYDRAULIC VALVES



SCALE 1 : 4  
ALL DIMENSIONS ARE IN mm

### SPECIFICATIONS:

#### Supply: (IN)

- 3/8 NPT
- 1000 psi max

#### Pitch: (OUT)

- 3/8 NPT

#### Drain: (DRN)

- 1/2 NPT
- 5 psi max back pressure

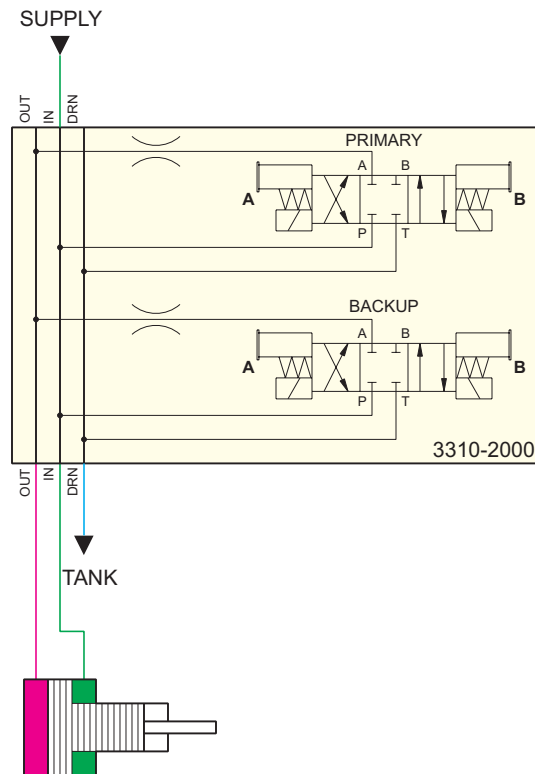
#### Environmental:

- Operating temperature 0 to +70 °C
- Storage temperature -40 to +85 °C
- Vibration: Frequency range 2-100 Hz  
Peak to peak amplitude 2 mm below 13.2 Hz  
Acceleration amplitude 0.7 G above 13.2 Hz

#### Physical:

- Dimensions:  
209 mm L × 152.5 mm W × 114.5 mm H  
(8.2 " L × 6.0 " W × 4.5 " H)
- Weight, typical 6 kg (13.2 lbs)

### TYPICAL CONNECTION DIAGRAM



**NOTE:**  
USE SINGLE WIRE BRAID REINFORCED FLEXIBLE HOSE FOR HYDRAULIC CONNECTIONS.

## PRIME MOVER CONTROLS INC.

3600 GILMORE WAY, BURNABY B.C. CANADA V5G 4R8

TEL (604) 433-4644 FAX (604) 433-5570 [www.pmc-controls.com](http://www.pmc-controls.com)