



# Type 3310-2200

The Type PA-EH2 Valve Assembly is suitable for driving external double acting cylinders.

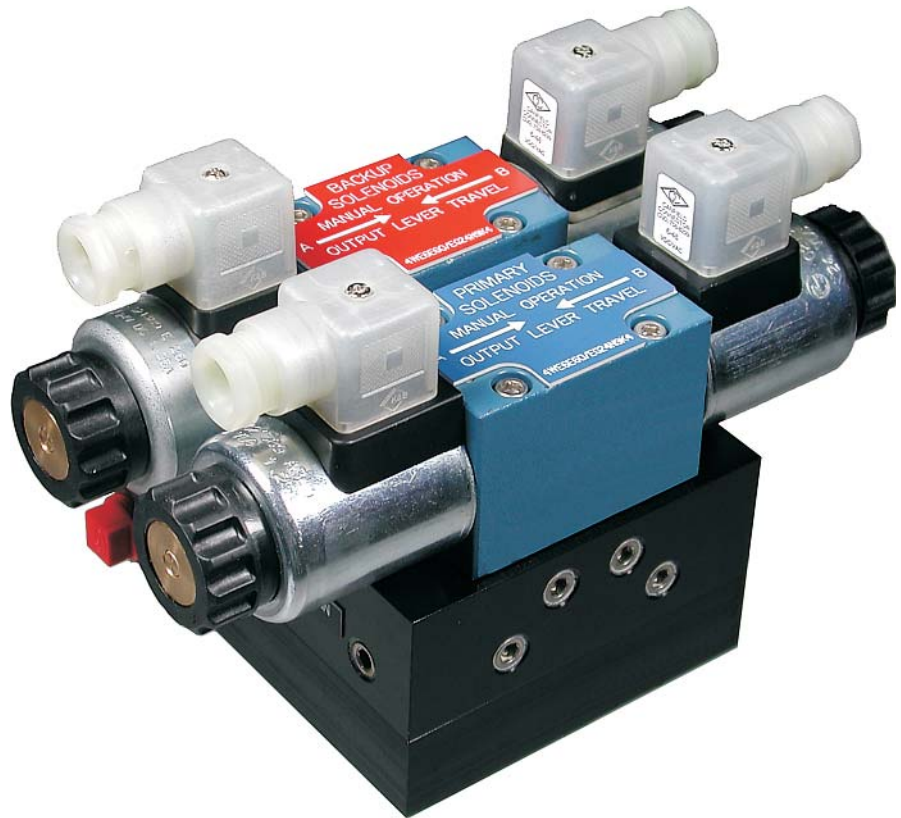
This allows the re-use of hydraulic pitch setting actuators on vessels that are upgrading to PMC's digital control system, the D-MaC

## FEATURES

- Primary and backup solenoids with manual override
- Indicating DIN connector
- Rugged construction with corrosion resistant materials
- Exceptional repeatability and accuracy
- Very low hysteresis
- Proven reliability and performance
- Fast yet stable automatic load control

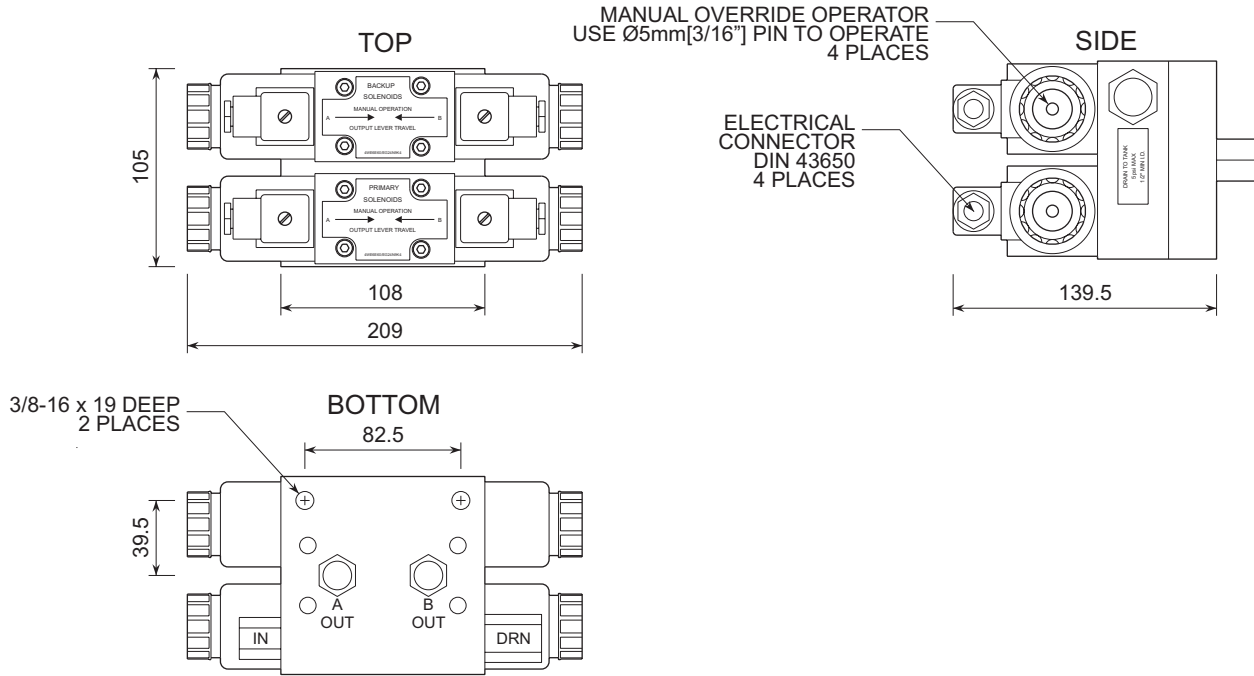
## DUAL ELECTRO-HYDRAULIC VALVE ASSEMBLY

MANIFOLD MOUNTED  
REDUNDANT SOLENOID VALVES  
WITH MANUAL OVERRIDES



**PRIME MOVER CONTROLS INC.**

## DIMENSIONS FOR 3310-2200 DUAL ELECTRO-HYDRAULIC VALVES



SCALE 1 : 4  
ALL DIMENSIONS ARE IN mm

### SPECIFICATIONS:

#### Hydraulic:

##### Supply: (IN)

- 3/8 NPT
- 1000 psi maximum

##### Pitch: (OUT)

- 3/8 NPT

##### Drain: (DRN)

- 1/2 NPT
- 5 psi max back pressure

#### Electric:

- Solenoid Coil 24 V<sub>DC</sub> / 1.25 A

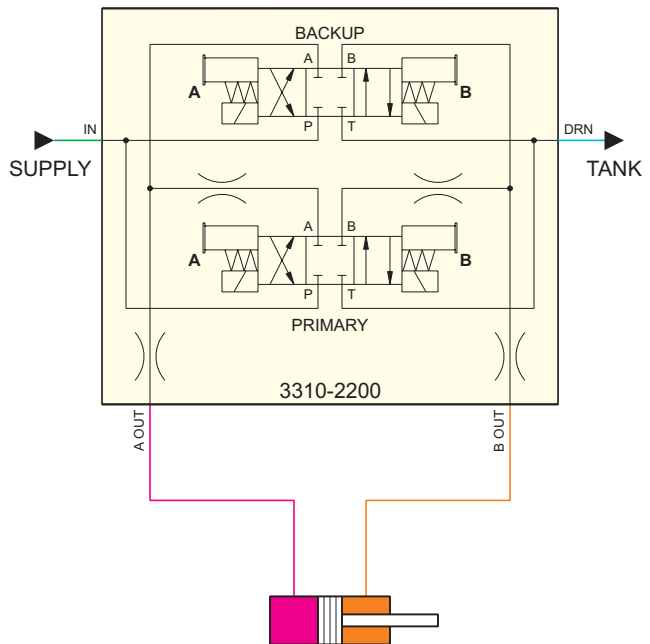
#### Environmental:

- Operating temperature 0 to +70°C
- Storage temperature -40 to +85°C
- Vibration: Frequency range 2 to 100 Hz  
Peak to peak amplitude 2 mm below 13.2 Hz  
Acceleration amplitude 0.7 g above 13.2 Hz

#### Physical:

- Dimensions:  
209 mm L × 105 mm W × 139.5 mm H  
(8.2" L × 4.1" W × 5.5" H)
- Weight, typical 6 kg (13.2 lbs)

### TYPICAL CONNECTION DIAGRAM



#### NOTE:

DO NOT USE THIS DRAWING FOR CONSTRUCTION.  
USE SINGLE WIRE BRAID REINFORCED FLEXIBLE HOSE FOR HYDRAULIC CONNECTIONS.

## PRIME MOVER CONTROLS INC.

3600 GILMORE WAY, BURNABY B.C. CANADA V5G 4R8

TEL (604) 433-4644 FAX (604) 433-5570 www.pmc-controls.com