



Electric Actuator

Application

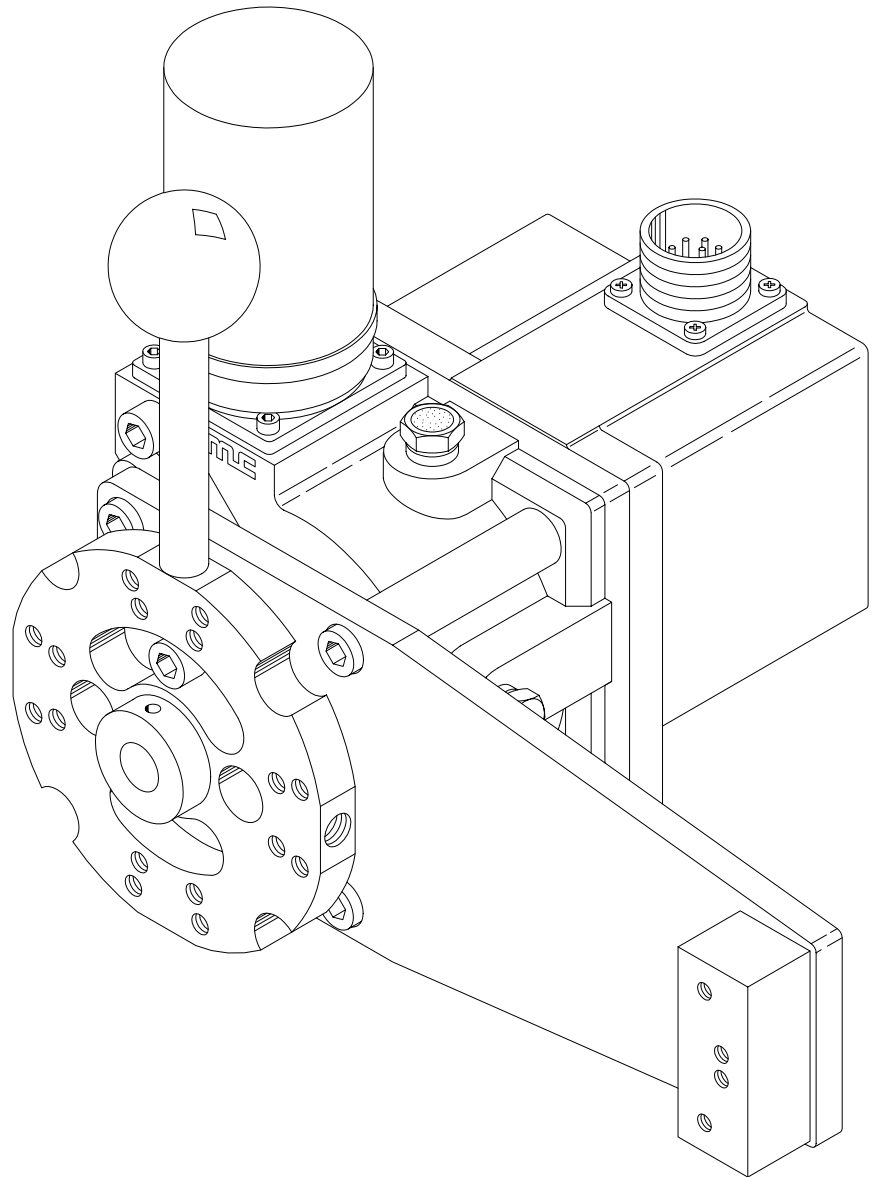
Remote Control for:

- Engine Throttle
- Clutch
- Winch
- Thruster
- Industrial.

Features

- Manual Override Allows Direct Control of Machinery, Without Disconnecting Linkage
- Adjustable Slip Clutch
- Rugged Construction with Corrosion Resistant Materials
- Water Resistant Against Water Spray
- Position Feedback and Limit Switches
- Available with Push-Pull Cable or Lever Output.

Type 3380

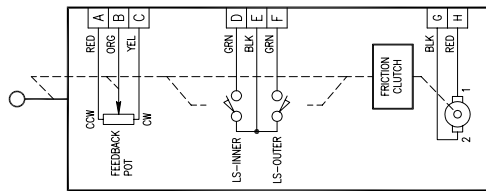
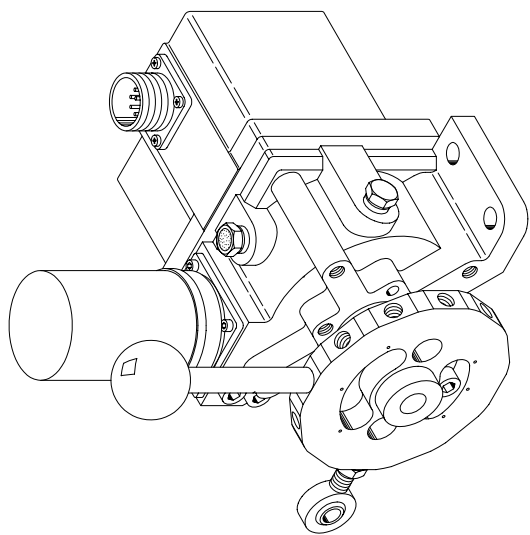


PRIME MOVER CONTROLS INC.

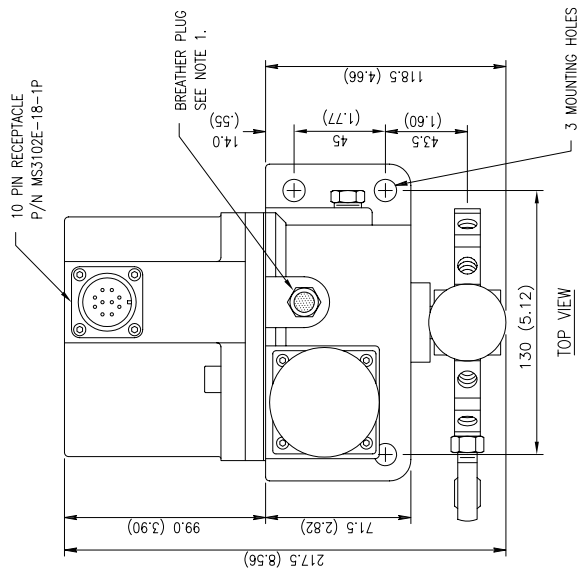
VANCOUVER, BC, CANADA

DESIGN MANUFACTURE AND SERVICE OF MARINE AND
INDUSTRIAL CONTROL COMPONENTS AND SYSTEMS

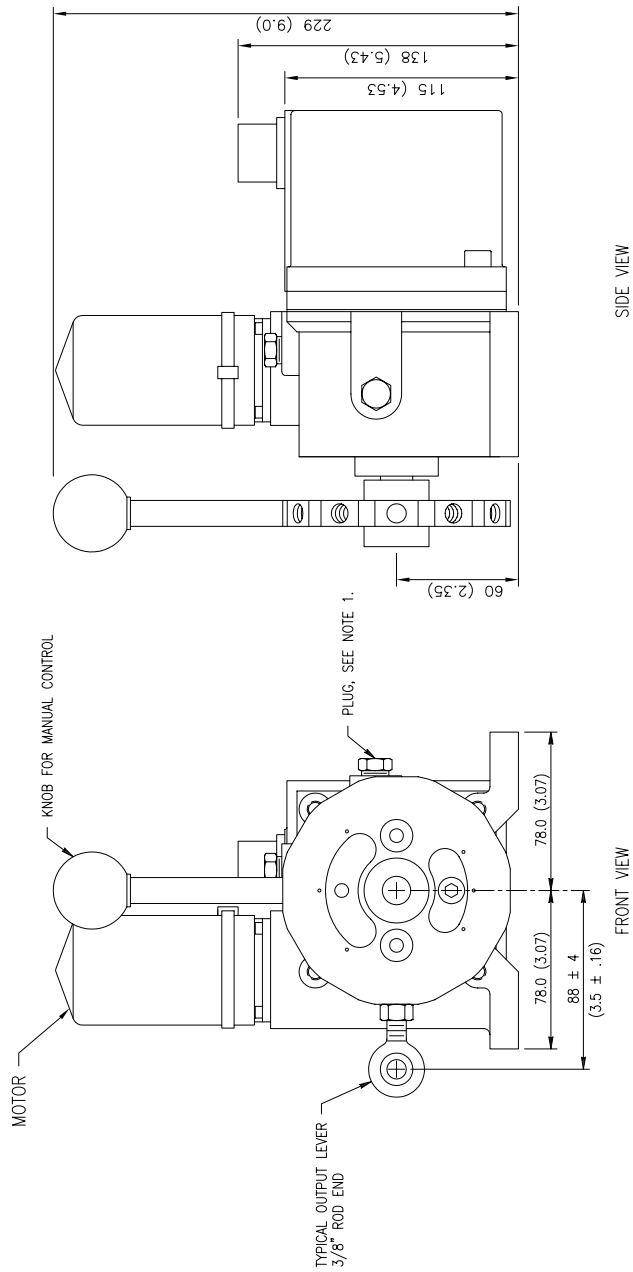
Electronic - Pneumatic - Hydraulic - Mechanical



TYPICAL SCHEMATIC



TOP VIEW



NOTES:

1. MOUNT ACTUATOR UPRIGHT AS SHOWN IN FRONT VIEW, OR 90° COUNTER CLOCKWISE. REMOVE PLUG FROM UPPERMOST POSITION AND INSTALL BREATHER PLUG. OIL LEVEL SHOULD BE 20 - 25mm (3/4" - 1") BELOW THE TOP THREAD.
2. MANUAL KNOB AND OUTPUT LEVER CAN BE MOUNTED IN 12 POSITIONS 30° APART.
3. LONGER OUTPUT LEVERS ARE AVAILABLE. CONTACT PMC.
4. MATING CONNECTOR P/N MS3106E-18-1S FOR 10 PIN RECEPTACLE IS AVAILABLE FROM PMC.
5. TRAVEL CAN BE SET FOR EITHER 60° OR 100°.
6. WITH PIN G NEGATIVE AND PIN H POSITIVE, THE OUTPUT SHAFT AND FEEDBACK POTENTIOMETER TURN CLOCKWISE AS SEEN IN THE FRONT VIEW.
7. MOTOR VOLTAGE: 12, 19 OR 24 VDC.
8. FRICTION CLUTCH SLIPPING TORQUE IS ADJUSTABLE UP TO 15 N.M (130 LB.IN).
9. WEIGHT: 5.2 KG (11.5 LB)
10. ACTUATOR IS AVAILABLE WITH RVDT INSTEAD OF POTENTIOMETER.
11. DIMENSIONS ARE IN mm (INCHES).

SPEED & TORQUE TABLE

| GEAR RATIO OF MOTOR | OUTPUT SPEED (DEGREES/S) | MAXIMUM SLIPPING TORQUE (LB-IN) |
|---------------------|--------------------------|---------------------------------|
| 11.5:1 | 60 | 65 |
| 19.7:1 | 35 | 100 |
| 38.3:1 | 18 | 130 |
| 65.5:1 | 10.5 | 130 |
| 127.7:1 | 5.5 | 130 |

OTHER RATIOS ARE AVAILABLE. CONTACT PMC.

| REV. | DATE | BY | DESCRIPTION |
|------|------|----|-------------|
| | | | |
| | | | |

DWN. P.I.D. DATE 89-05-05 REF. SCALE 1:4
 APPR. DATE
 ELECTRIC ACTUATOR WITH LEVER OUTPUT
 ARRANGEMENT DETAILS
PRIME MOVER CONTROLS INC.
 VANCOUVER, BC, CANADA
 DWG. No. C-3380-6-03