



Remote Control Head

Type SCH-AA

Dependable Precise Control

SCH-AA control heads provide remote control for applications requiring two on-off pneumatic signals.

Watertight

Completely watertight design allows outside installation.

Rugged Construction

Built to endure heavy use. All cams, and detent, have roller followers for reduced wear and smooth operation.

Safety Latch

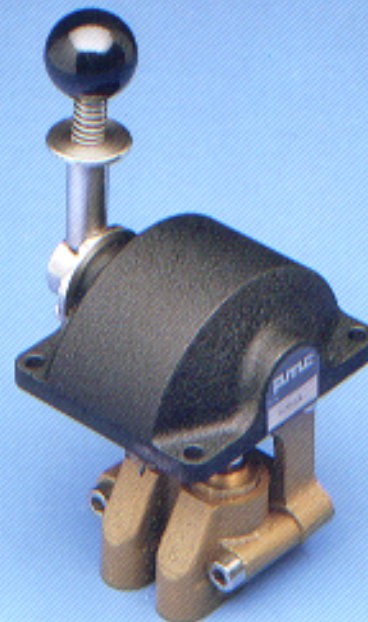
Optional safety latch allows control lever to be locked into position.

Corrosion Resistant

SCH control heads are built with materials that are compatible with the hostile marine environment.

Versatility

Modular construction allows many configurations of cams and directional valves as well as many control handles in red or black. Covers are available with either chrome finish or black epoxy paint.



PRIME MOVER CONTROLS INC.

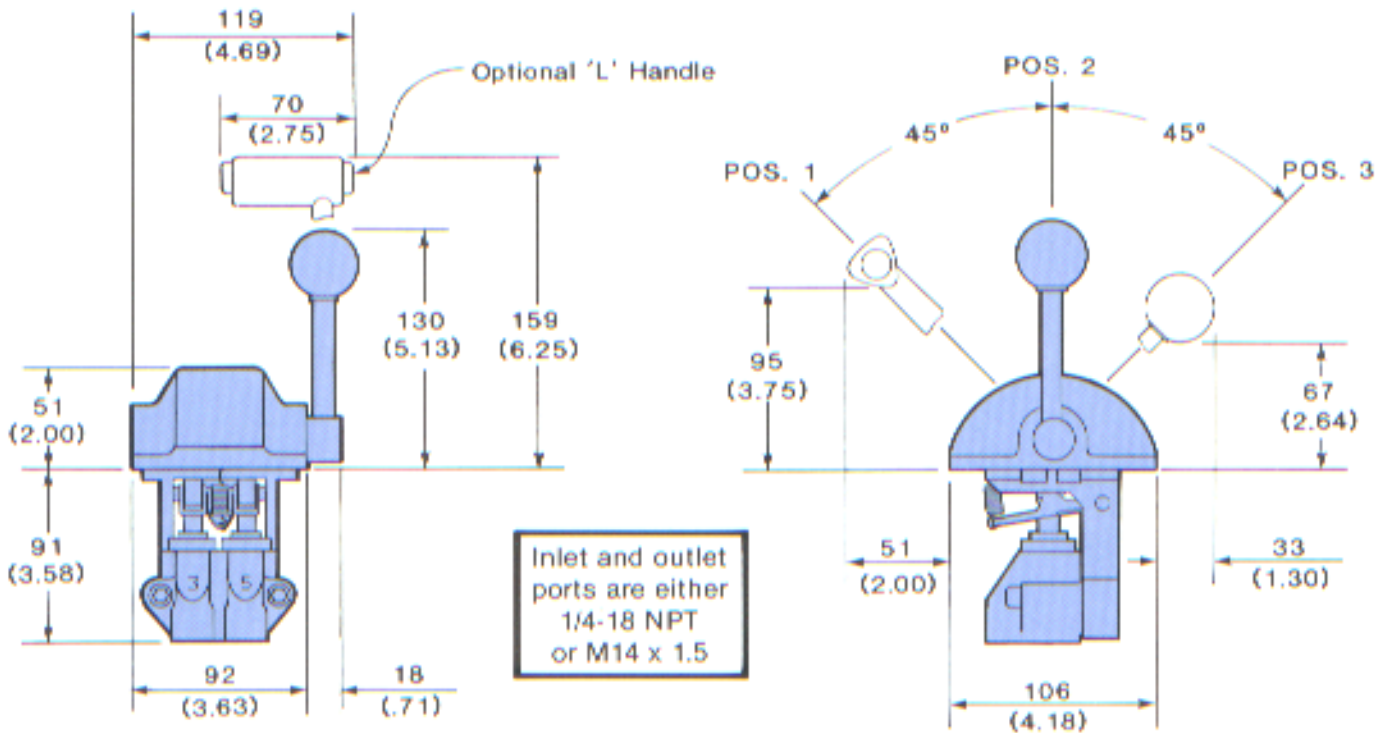
VANCOUVER, BC, CANADA

DESIGN, MANUFACTURE AND SERVICE OF MARINE AND
INDUSTRIAL CONTROL COMPONENTS AND SYSTEMS

Electronic - Pneumatic - Hydraulic - Mechanical

Remote Control Head

Type SCH-AA

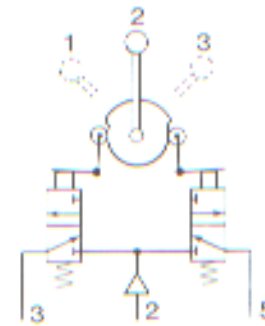


Dimensions are in $\begin{matrix} \text{mm} \\ \text{(inches)} \end{matrix}$

Typical Arrangements

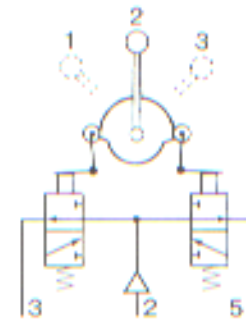
4-Way Exhaust Center Valve, 3 Position Handle

HANDLE POSITION	PORTS SUPPLIED	
	PORT 3	PORT 5
1	X	
2		
3		X



4-Way Supply Center Valve, 3 Position Handle

HANDLE POSITION	PORTS SUPPLIED	
	PORT 3	PORT 5
1	X	
2	X	X
3		X



For more information, see bulletin UB-5072/5073.

PRIME MOVER CONTROLS INC.

3600 Gilmore Way, Burnaby, BC, Canada V5G 4R8 Tel: (604) 433-4644 FAX: (604) 433-5570