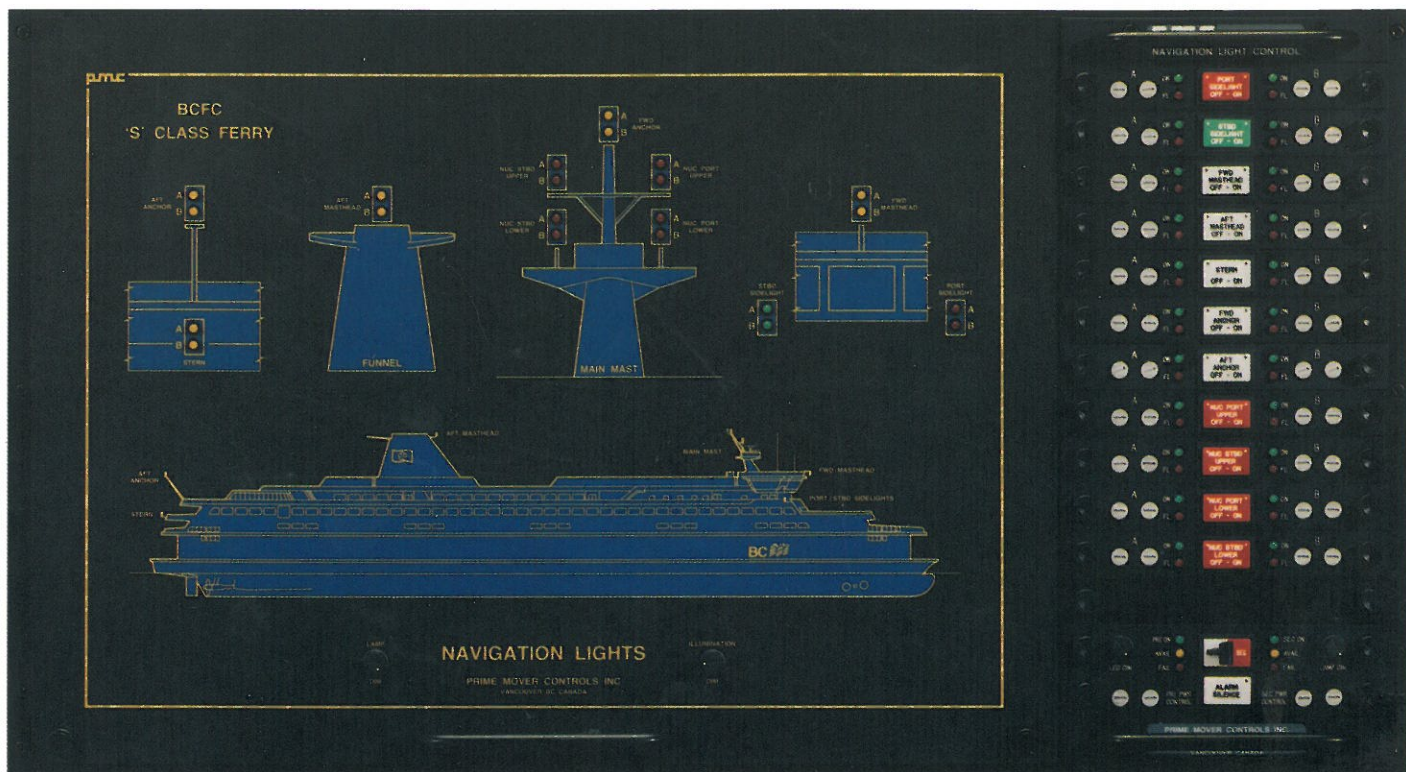




MIMIC PANELS AND CONTROLS FOR NAVIGATION LIGHTS



Backlit navigation light mimic with integral 8012 navigation light control panel, 16.5 x 30 inch (420 x 760 mm)

A PMC navigation light mimic is a fixed graphic display of the navigation lights on a pictorial representation of a ship. It complements PMC's navigation light control panel by providing a visual display of the location and status of each remote navigation light.

Mimics can be provided with various models of PMC navigation light control panels. The navigation light control panel can be mounted together with the mimic, or remote. Mimic displays can be optionally back-lit, with separate dimmers for indicator lights and back-lighting.

Each mimic is custom designed to accurately display the vessel arrangement and navigation

light locations. Special care is taken to achieve an attractive, visually balanced appearance within the allocated space.

PMC's graphic artists can use either manual or CAD generated ship's general arrangement drawings to design a preliminary mimic display. A drawing of the preliminary arrangement is issued for customer input and approval, before production begins.

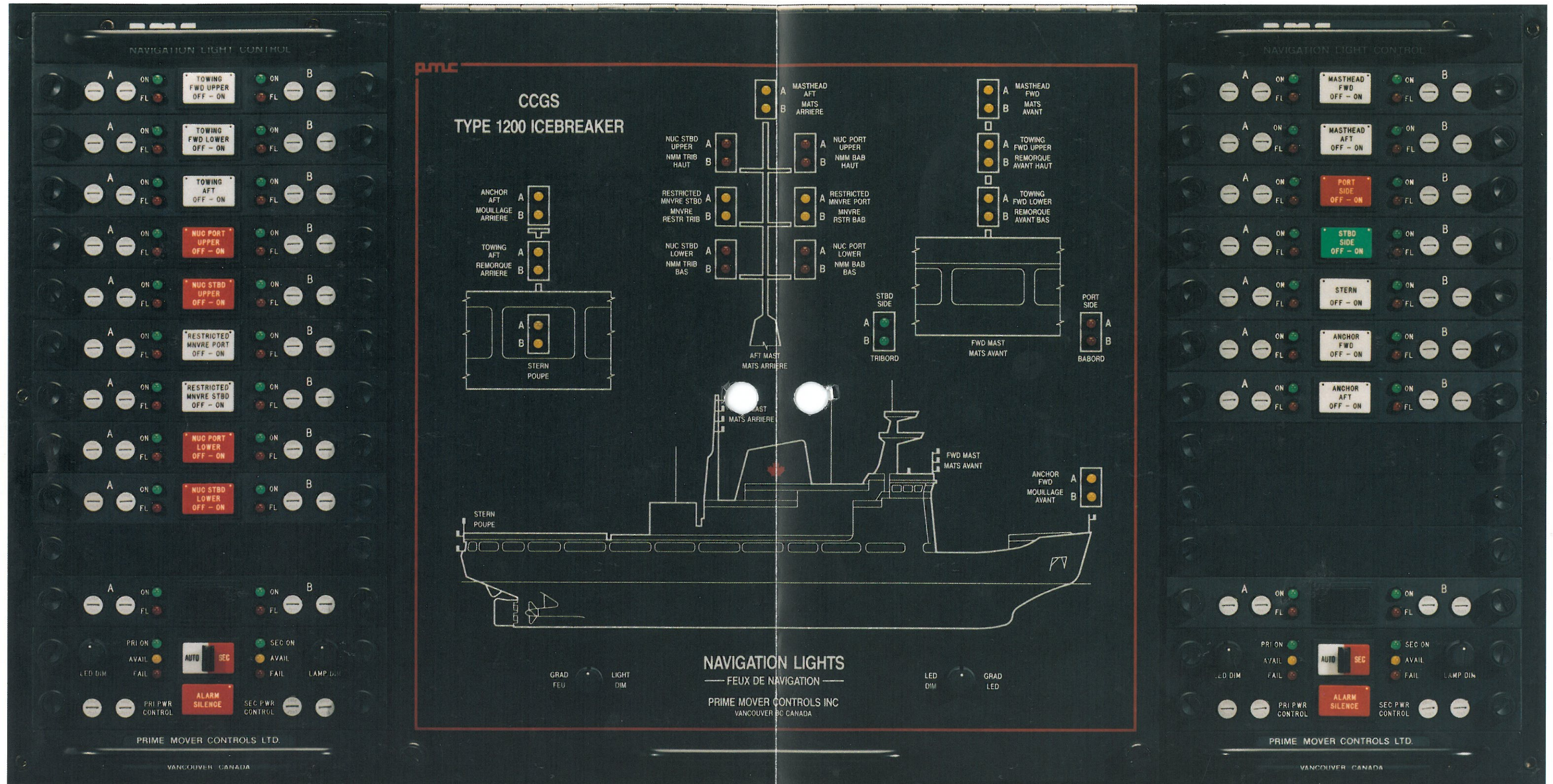
The mimic panel is made from a durable polycarbonate overlay with a non glare scratch resistant finish, bonded to a rugged, flush mounting plate. All panels are wired and tested as a system before They are shipped.

PRIME MOVER CONTROLS INC.

3600 Gilmore Way, Burnaby, BC, Canada V5G 4R8 Tel: (604) 433-4644 FAX: (604) 433-5570

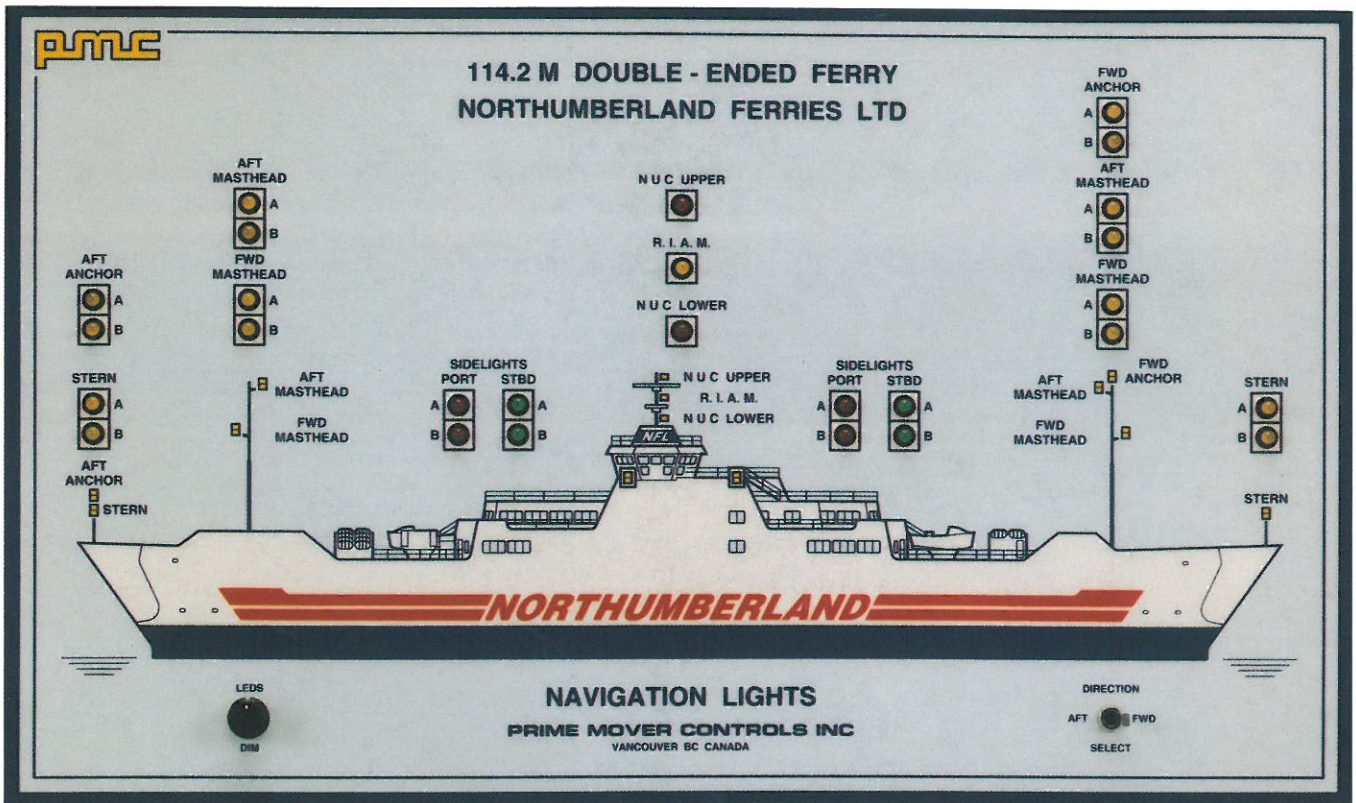
SB-8150-1001

Back-lit navigation light mimic with two integral 8012 navigation light control panels, 15.5 x 30 inch (395 x 760 mm)
 Front access allows easy replacement of mimic backlighting bulbs.

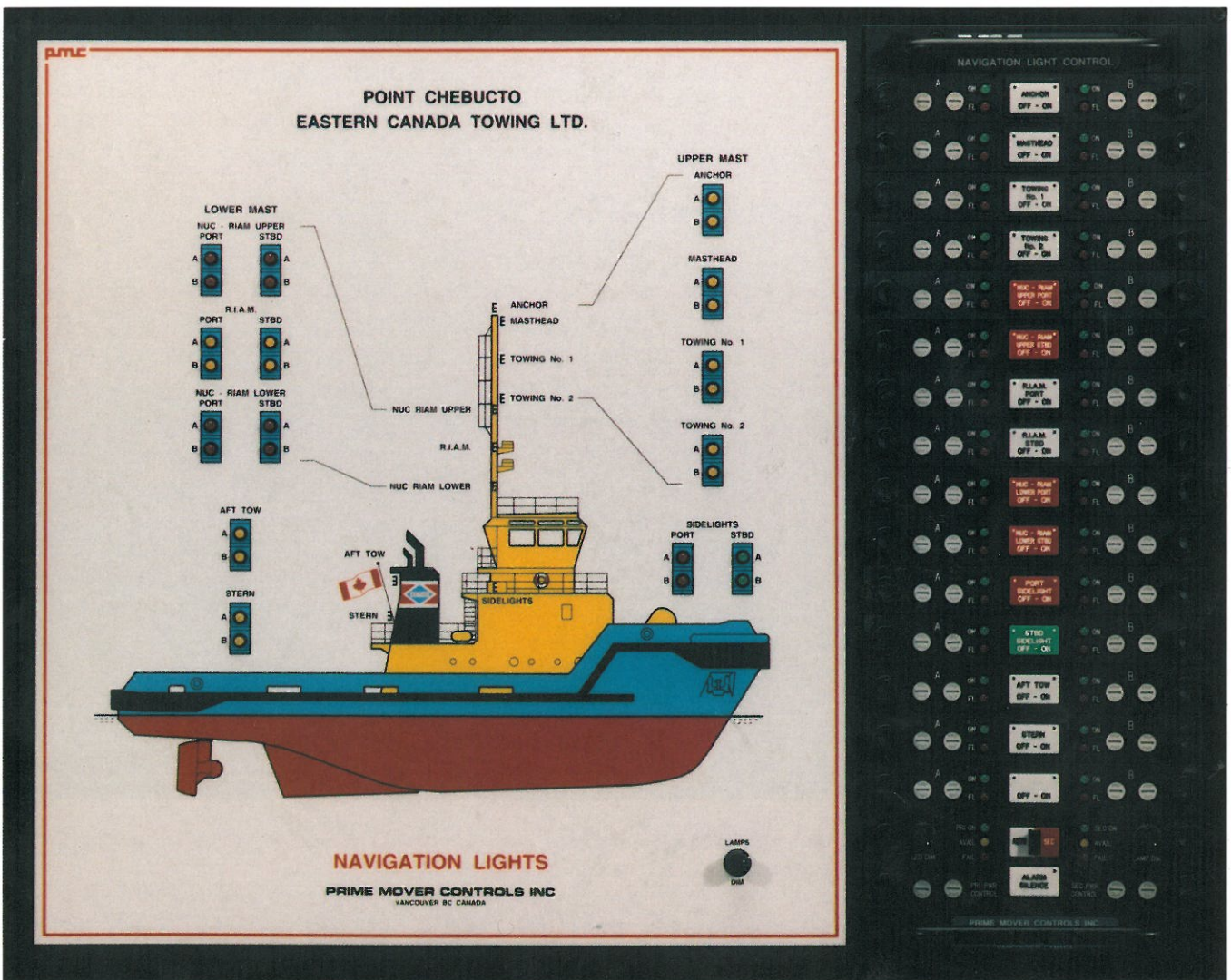


Other Shipboard Mimics:

This brochure shows navigation light mimics; PMC also makes mimics for other applications, including machinery display, switchboard bus display, ship's security and many more.



Remote navigation light mimic with direction reversing switch for double-ended ferry, 11 x 18 inch (280 x 460 mm)



Navigation light mimic with integral 8012 navigation light control panel, 20 x 25 inch (510 x 635 mm)