



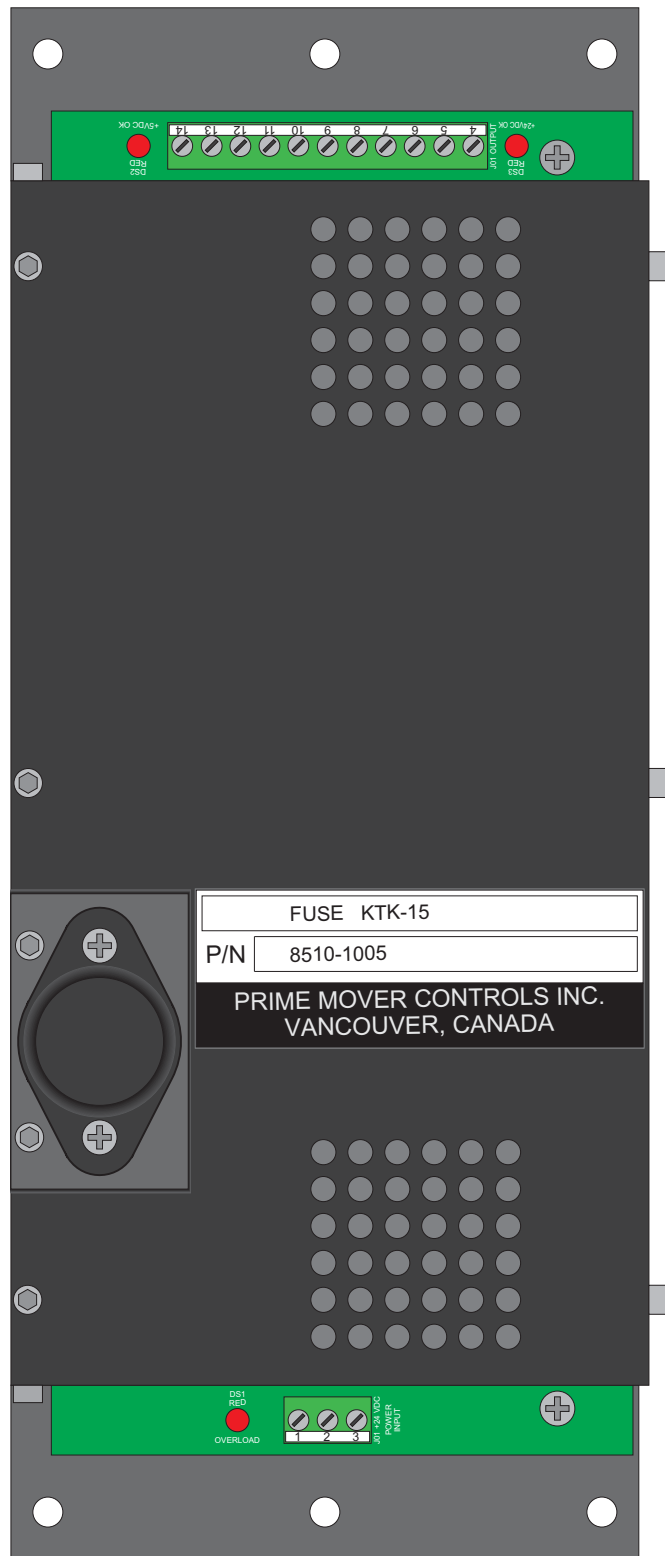
# Type 8510-1005

The PMC 8510-1005 converts 18 to 35 V<sub>DC</sub> input into a regulated 24 V<sub>DC</sub> output and a regulated 5 V<sub>DC</sub> output. Both output voltages are isolated from each other and the supply voltage.

## FEATURES

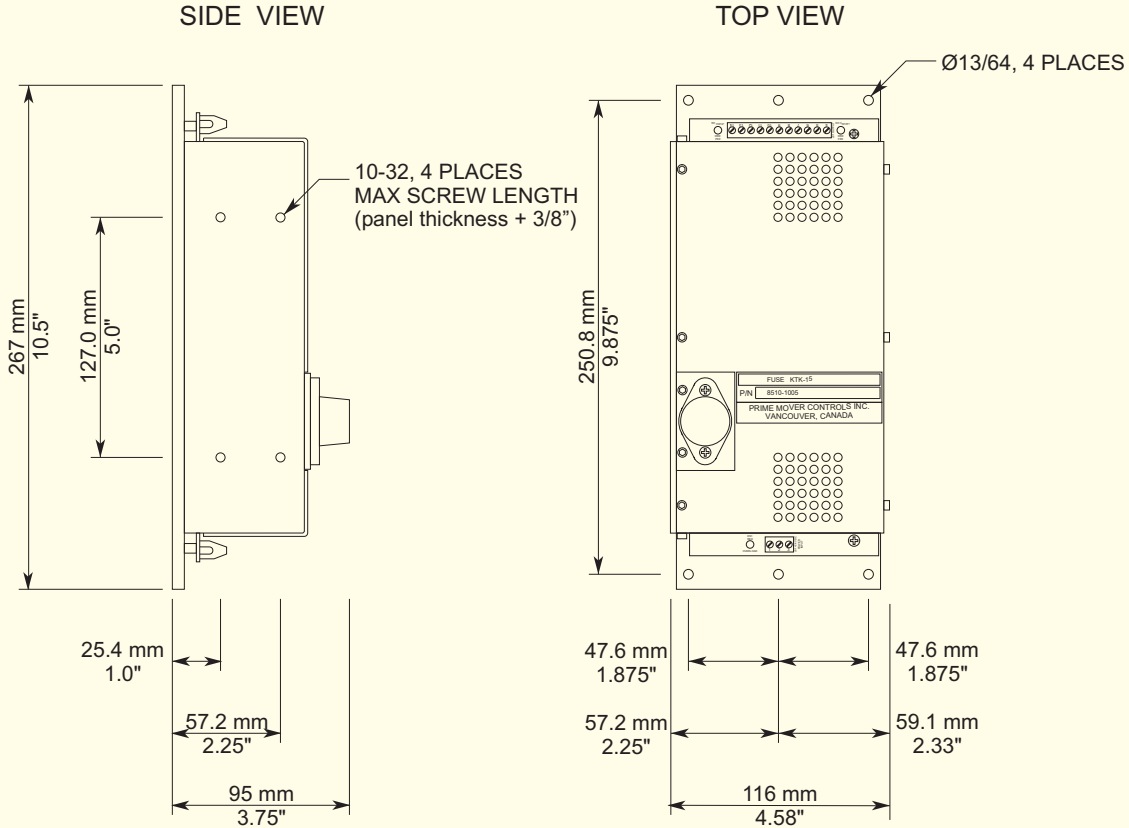
- Overvoltage crowbar at the input and at each output.
- +5 V<sub>DC</sub> and +24 V<sub>DC</sub> power on indicators.
- Overload indicator.
- Fault contact.
- 500 V galvanic isolation between inputs and outputs.
- Multiple mounting configurations.

## IMACS DC TO DC CONVERTOR



**PRIME MOVER CONTROLS INC.**

## DIMENSIONS FOR 8510-1005 DC TO DC CONVERTOR



SCALE 1 : 4

### SPECIFICATIONS:

#### Supply 24 V<sub>DC</sub>:

- Nominal 24 V<sub>DC</sub>, range 18 to 35 V<sub>DC</sub>
- Reverse and overvoltage protection to 120 V<sub>AC</sub>
- ½ A quiescent, 6 A nominal, 10 A max
- Input power fuse, 15 A, type KTK-15

#### Output Specifications:

- +5 V<sub>DC</sub>, 5 A max
- +24 V<sub>DC</sub>, 5 A max

#### Environmental:

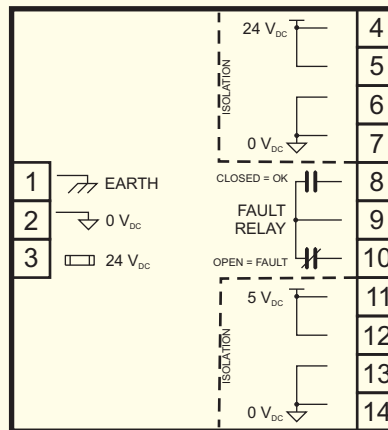
- Operating temperature 0 to 70°C
- Storage temperature -20 to 70°C
- Vibration: Frequency range 2 to 100 Hz  
Peak to peak amplitude 2 mm below 13.2 Hz  
Acceleration amplitude 0.7 g above 13.2 Hz

#### Physical:

- IP20 case
- Dimensions 116 mm W × 267 mm L × 95 mm H (4.6" W × 10.5" L × 3.75" H)
- Weight 1.7 kg (3.75 lbs)
- Terminal blocks for 14 to 20 AWG wires

### Diagnostics:

- Fault Output, form 'C' contacts, 1 A @ 30 V<sub>DC</sub>
- +5 V<sub>DC</sub> OK Indicator
- +24 V<sub>DC</sub> OK Indicator



## PRIME MOVER CONTROLS INC.

3600 GILMORE WAY, BURNABY B.C. CANADA V5G 4R8

TEL 604 433-4644 FAX 604 433-5570 www.pmc-controls.com