



ROTATING BEACON

Applications

Visual signalling unit for:

- Machinery Alarms
- Fire Alarms
- Call Signals
- Danger Areas
- Vehicle Signals
- Navigation Warnings
- Road Hazards
- Traffic Safety.

Features

- High luminous intensity from halogen lamp located at focus of three rotating condenser lenses
- Narrow angle, intense light beams at 225 flashes per minute
- Smooth, balanced rotation of three lens optics
- Reliable, lightweight, weathertight construction with non-corroding materials
- Easy assembly and parts replacement.

TYPE 8540-1400



PRIME MOVER CONTROLS INC.

VANCOUVER, BC, CANADA

DESIGN, MANUFACTURE AND SERVICE OF MARINE AND
INDUSTRIAL CONTROL COMPONENTS AND SYSTEMS

Electronic - Pneumatic - Hydraulic - Mechanical

SB-8540-1400A

ORDERING DATA

PART NUMBER 8540-1400-

POWER	
12 VDC	1
24 VDC	2
110 VAC	3
220 VAC	4

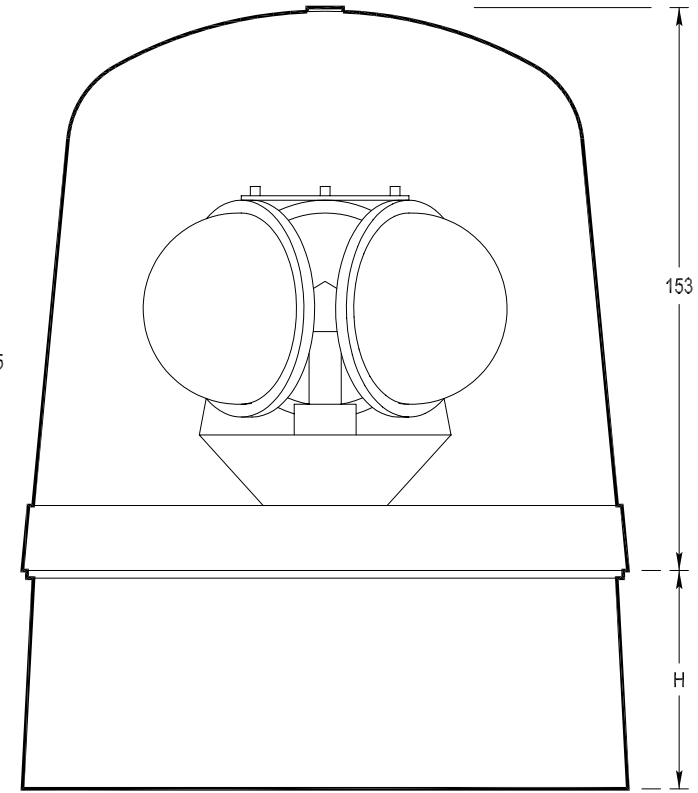
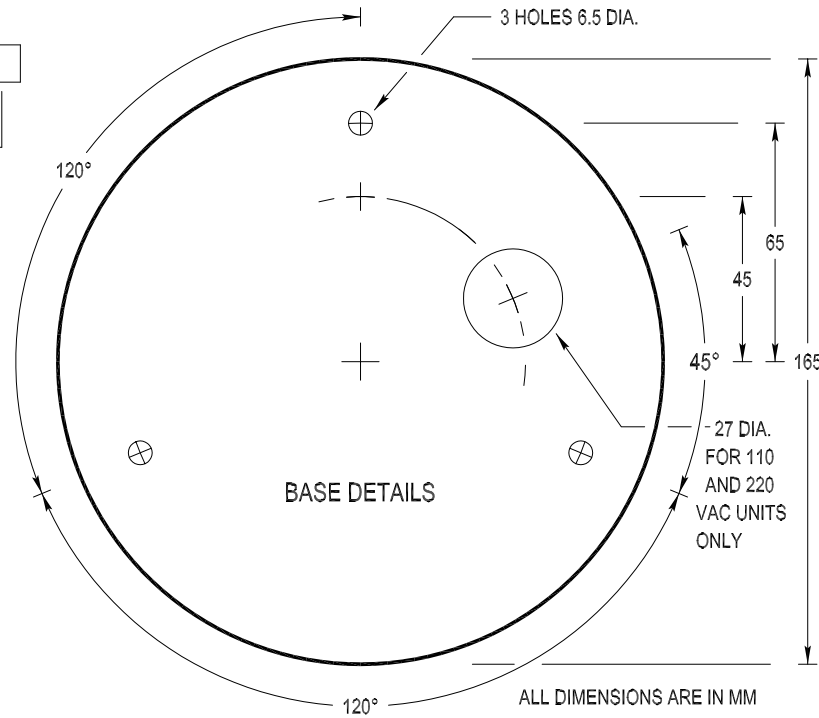
LENS COLOR	
RED	R
GREEN	G
AMBER	A
BLUE	B
CLEAR	C

INSTALLATION:

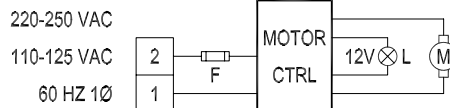
1. LOOSEN HOOD CATCH AND REMOVE HOOD BY TURNING IT COUNTER-CLOCKWISE
2. UNFASTEN PLATE ASSEMBLY WITH A SHORT COUNTER-CLOCKWISE TURN AND LIFT IT OUT OF THE BASE
3. FOR THE 110/220 VAC MODELS REMOVE THE SAFETY PACKING FROM UNDER THE TRANSFORMER
4. FASTEN THE BASE HORIZONTALLY USING THE ENCLOSED GASKET - SEE BASE DETAILS FOR LOCATION OF MOUNTING HOLES
5. CONNECT TERMINALS ON PLATE ASSEMBLY TO POWER SUPPLY AS INDICATED ON THE APPROPRIATE SCHEMATIC
6. INSERT PLATE ASSEMBLY IN BASE AND LOCK IT WITH A SHORT CLOCKWISE TURN
7. REPLACE HOOD WITH A STRONG CLOCKWISE TURN AND TIGHTEN HOOD CATCH.

LAMP REPLACEMENT:

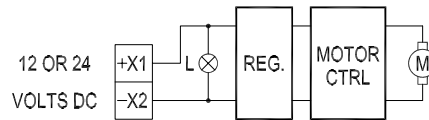
1. LOOSEN HOOD CATCH AND REMOVE HOOD BY TURNING IT COUNTER-CLOCKWISE
2. REMOVE THE LENS RETAINING RING FROM TWO LENSES AND TILT ALL LENSES DOWN
3. REMOVE THE KNURLED LAMP SOCKET RETAINER CAP AND REMOVE HALOGEN LAMP FROM THE BLACK LAMP BASE
4. INSERT NEW LAMP, REPLACE RETAINER CAP AND SECURE LENSES IN THE UPRIGHT POSITION WITH THE LENS RETAINING RING
5. REPLACE HOOD WITH A STRONG CLOCKWISE TURN AND TIGHTEN HOOD CATCH



AC CIRCUIT



DC CIRCUIT



NOTE: 12 AND 24 VOLT DC UNITS ARE IDENTICAL EXCEPT FOR MOTOR CONNECTOR PLACEMENT

CAUTION

DO NOT TOUCH LENS OR LAMP SURFACE AS BREAKAGE MAY OCCUR WHEN BEACON IS TURNED ON

	110/220 VAC	12/24 VDC
FUSE (F)	GMA 1/2 A	—
LAMP (L) PART No.	12 VOLT HI-64150	24V HI-64155
MOTOR (M)	24 VAC	5 VDC
WATTS	60	60W AT 12VDC 70W AT 24VDC
RPM	75	75
No. OF LENSES	3	3
FLASHES PER MIN.	225	225
HEIGHT (H)	89 mm	59 mm
WEIGHT	2.9 kg 6.39 lbs	1.8 kg 3.97 lbs

SPECIFICATIONS:

1. UNITS ARE COMPLETELY WATERTIGHT AND NON CORRODING
2. OPTICS CONSIST OF THREE ASPHERICAL CONDENSING LENS SPACED 120° APART
3. LAMP IS HIGH INTENSITY LOW VOLTAGE HALOGEN BULB
4. FOR HORIZONTAL MOUNTING ON A PLANE SURFACE
5. OPERATING TEMPERATURE FOR CONTINUOUS SERVICE IS -30°C TO +42°C FOR OTHER LIMITS REDUCE DUTY CYCLE
6. CONFORMS TO DIN 14620

REV.	DATE	BY	DESCRIPTION
2	97-02-13	BDL	MODIFIED DC CIRCUIT
1	6 JUL 93	RPD	MODIFIED AC CIRCUIT

DWN. RPD	DATE 92 FEB 20	REF.
APR.	DATE	SCALE 1:2
ROTATING BEACON LAMP ASSEMBLY PMC PART No. 8540-1400		

PRIME MOVER CONTROLS INC. VANCOUVER, BC, CANADA	
TECHNICAL SPECIFICATIONS	DWG. No. A-8540-1400