



Series 8551-1000 MPC-U SYSTEM

FEATURES

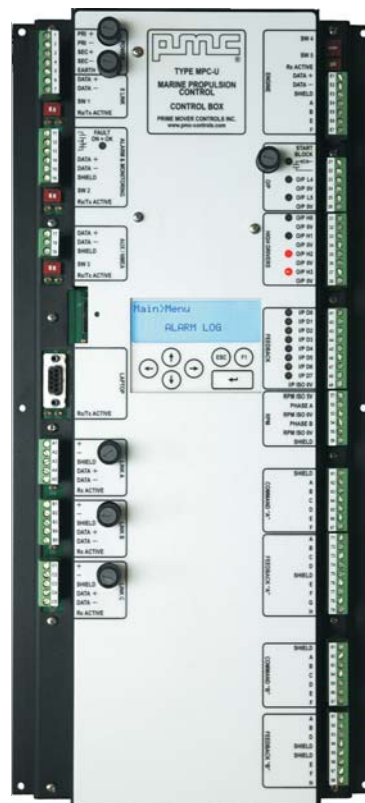
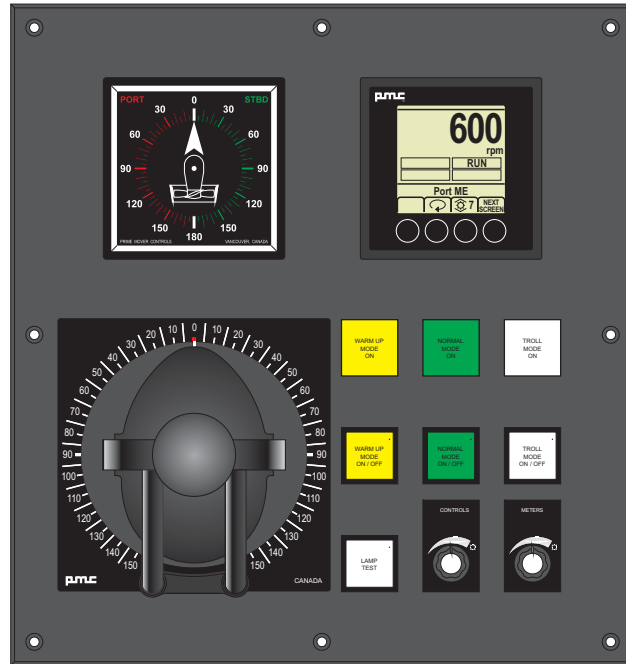
- Electronic engine link
- Electronic gearbox link
- Gear shift and throttle sequencing
- Safety interlocks
- Station transfer
- Serial communication reduces wiring
- Up to 15 control stations
- Redundant control lever position sensing
- Redundant 12 V or 24 V supplies
- Control box multi-function display and keypad for alarms, diagnostics, field calibration and parameter programming
- Isolated inputs
- Isolated analog outputs
- Self diagnostics
- Alarm contact and monitoring communication ports
- Alarm log
- LED indication for digital I/O and communication ports
- Isolated communication ports
- Engine J1587 and J1939 communication port
- NMEA communication port for VDR
- Laptop communication port or LCD for calibration and parameter programming

OPTIONS

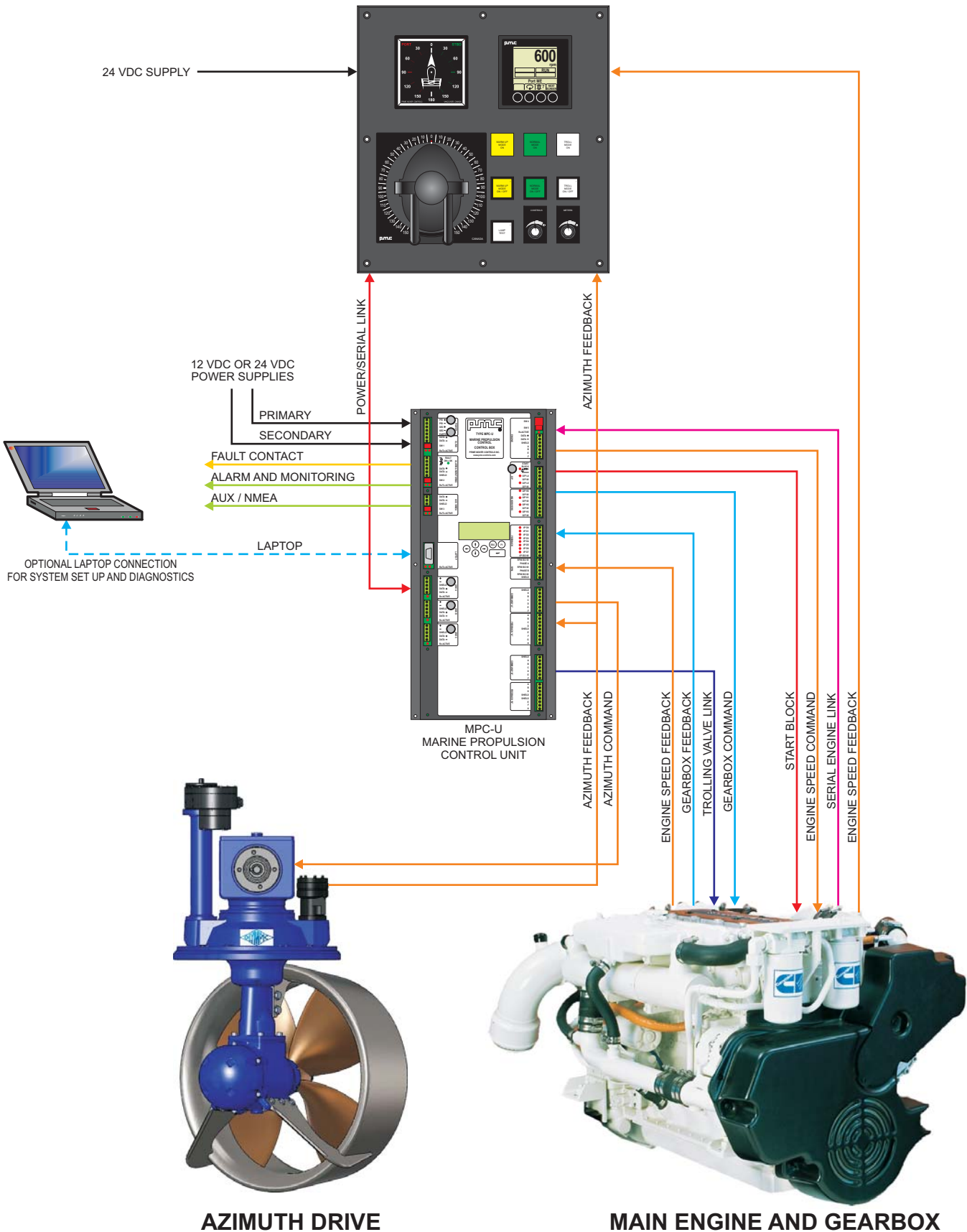
- Azimuth drive
- Uni or bi-directional fixed pitch
- Start block
- Engine boost
- Reverse and neutral timing
- Shaft brake
- Dynamic braking
- Trolling

MARINE PROPULSION CONTROL-UNIVERSAL

For vessels with fixed pitch azimuth drives
Azimuth Command TYPE 8551-1100
Azimuth and Trolling Command TYPE 8551-1200



SIMPLIFIED SINGLE STATION CONTROL SYSTEM TYPICAL - DO NOT USE FOR CONSTRUCTION



AZIMUTH DRIVE

MAIN ENGINE AND GEARBOX

SERIES 8551-1000 MARINE PROPULSION CONTROL - UNIVERSAL

SPECIFICATIONS:

Supply:

- Dual monitored inputs
- Nominal 12 V_{DC} or 24 V_{DC}, range 9 to 36 V_{DC}
- Reverse voltage protection
- Nominal 350 mA @ 24 V_{DC}, (not including connected items)
- Input power fuses ABC-15

Inputs / Outputs:

- Start block: NO contact, 10 A @ 24 V, fuse ABC-15
- 2 outputs 1 A @ 24 V_{DC}
- 4 high drivers, 5 A @ 24 V_{DC}
- 8 isolated inputs nominal 24 V_{DC}
- 1 isolated rpm input
- 1 command output (8551-1100)
- 2 command outputs (8551-1200)
- 1 feedback input (8551-1100)
- 2 feedback inputs (8551-1200)

Communication:

- 1 Alarm and monitoring: isolated RS-485 Modbus RTU slave
- 1 NMEA: isolated RS-485
- 1 Laptop: isolated RS-232 Modbus RTU slave
- 1 Engine: isolated J1587 or J1939

Environmental:

- Operating temperature -25 to +70°C
- Storage temperature -30 to +80°C
- Vibration: Frequency range 2 to 100 Hz
Peak to peak amplitude 2 mm below 13.2 Hz
Acceleration amplitude 0.7 g above 13.2 Hz
- CE compliant for EMC (IEC/EN60945)

Physical:

- IP40
- Dimensions (8551-1100):
450 mm L × 210 mm W × 44.1 mm H
(17.7" L × 8.3" W × 1.7" H)
- Dimensions (8551-1200):
355 mm L × 210 mm W × 44.1 mm H
(14" L × 8.3" W × 1.7" H)
- Weight, typical 1.9 kg (4.1 lbs)
- Removable terminal blocks for 14 to 20 AWG wires

Diagnostics:

- Fault relay: form C contact, 9.5 A @ 30 V_{DC}
- Multi-function display and keypad for alarms, diagnostics, field calibration and parameter programming
- Tx & Rx activity LEDs
- Digital I/O status LEDs

TYPE 5360-1000 AZIMUTH CONTROL HEAD - DIGITAL

FEATURES:

- 144 mm DIN size
- Integrated propulsion control with 'one handed' operation of power and 360° rotation
- Illuminated power and rotation scales, 100%

dimnable

- Custom power and rotation scales
- Maximum four potentiometers for power
- Detents with adjustable detent forces
- Numerous power lever travel options available
- Adjustable friction brakes
- Available for limited rotation applications such as water jets, or propulsion power combined with rudder control
- Plug-in terminal connections

SPECIFICATIONS:

Environmental:

- Corrosion resistant
- Anodized marine grade aluminum case
- IP66 above console surface
- Operating temperature -25°C to +70°C
- Storage temperature -40°C to +85°C
- Vibration: Frequency range 3 Hz to 100 Hz
Peak to peak amplitude 2 mm below 13.2 Hz
Acceleration amplitude 0.7 g above 13.2 Hz

Physical:

- 144 mm DIN size
- Flush mount
- Dimensions:
196 mm H × 196 mm W × 314 mm D
(7.72" H × 7.72" W × 12.35" D)
- Weight, typical 2.6 kg (5.8 lbs)

TYPE 8161-1000 AZIMUTH DISPLAY METER

FEATURES

- 96mm DIN size
- Flush mount
- Plug-in terminal connections
- Corrosion resistant
- Dust protected housing with glass front
- IP66 with optional watertight equipment
- 100% dimmable illumination
- Custom scales

SPECIFICATIONS:

Supply:

- 24 V_{DC} ± 20%
- Reverse voltage protection
- Typical 55 mA, Max 100 mA
- Illumination 23.5 mA max @ 24 V_{DC}

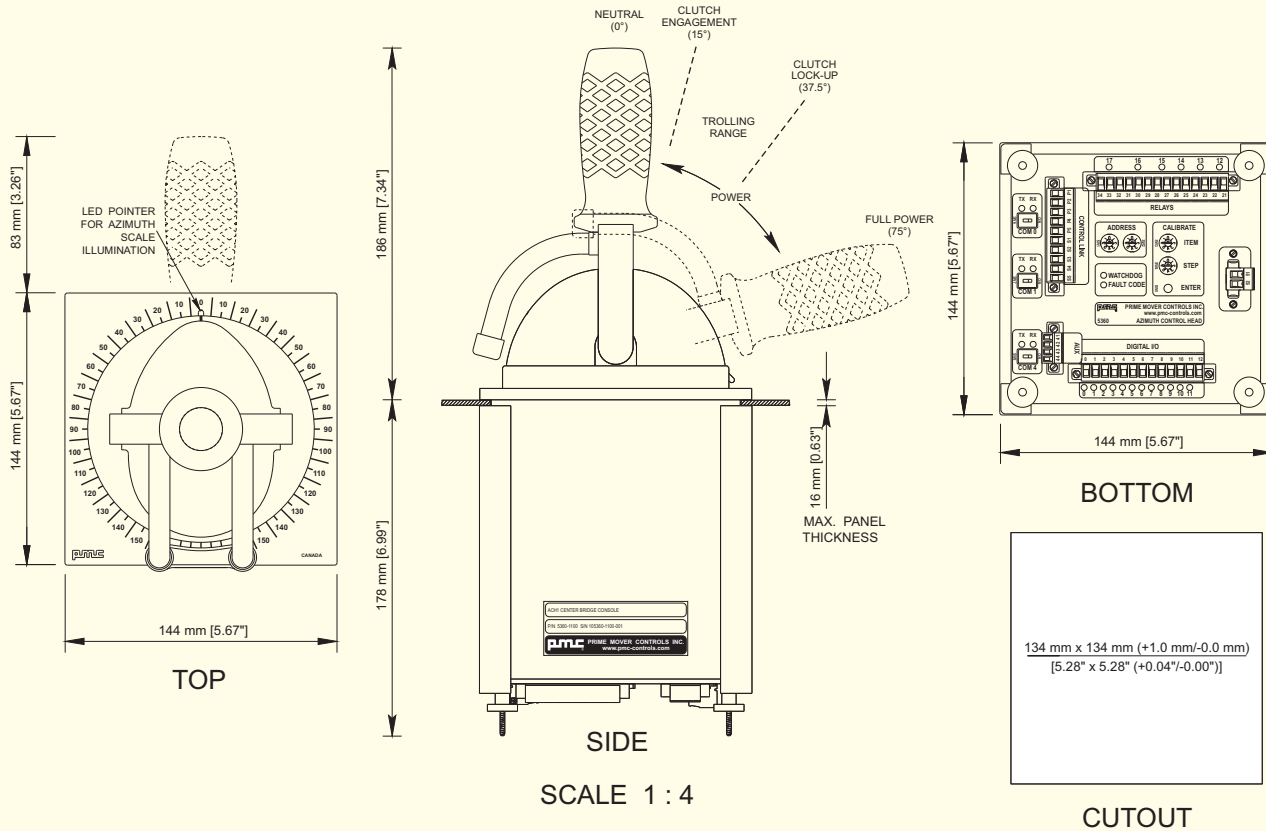
Environmental:

- Operating temperature -20 to +70°C
- Storage temperature -40 to +85°C
- Vibration: Frequency range 3 to 100 Hz
Peak to peak amplitude 2 mm below 13.2 Hz
Acceleration amplitude 0.7 g above 13.2 Hz

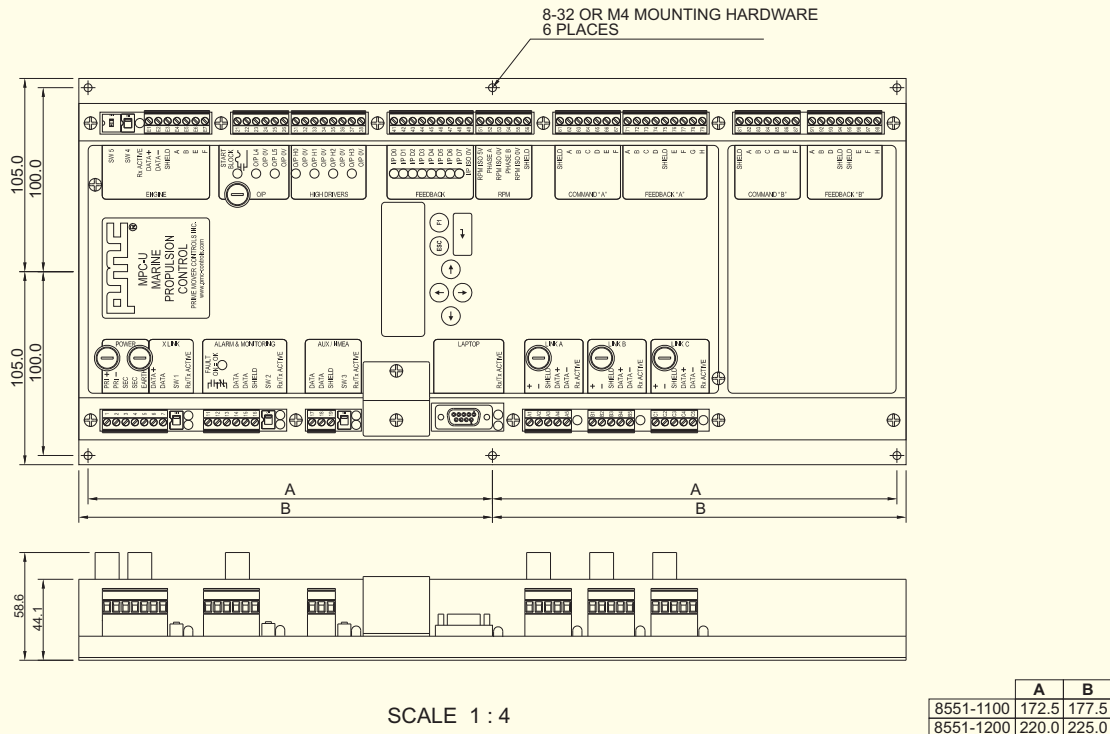
Physical:

- Dimensions:
96 mm H × 96 mm W × 127 mm D
(3.78" H × 3.78" W × 5.0" D)
- Weight, typical 0.6 kg (1.3 lbs)

DIMENSIONS FOR SERIES 5360-1100 AZIMUTH CONTROL HEAD - DIGITAL
 SHOWN WITH OPTIONAL CONTROL LEVER ASSEMBLY



DIMENSIONS FOR SERIES 8551-1000 MARINE PROPULSION CONTROL - UNIVERSAL



PRIME MOVER CONTROLS INC.

3600 GILMORE WAY, BURNABY BC CANADA V5G 4R8

TEL 604 433-4644 FAX 604 433-5570 www.pmc-controls.com