



## **CUSTOM INTEGRATED BRIDGE SYSTEMS INTEGRATED MACHINERY, ALARM AND CONTROL SYSTEMS**

**71.8 m High Speed Passenger Vehicle Ferries  
Det Norske Veritas  $\times$ 1A1 R4 HSLC Car Ferry B EO**



**Alaska Marine Highway System**

***MV Fairweather  
MV Chenega***



**PRIME MOVER CONTROLS INC.**

VB 3056A





## INTEGRATED MACHINERY, ALARM and CONTROL SYSTEM *Omni Chief* Distributed Control and Monitoring Unit

Direct Communication Link to MTU Engines

Direct Communication Link to Water jet and Fire Alarm Systems

Direct Communication Link to ADIS, HMON, HVAC, VDR

Integrated Bridge System

Bridge Consoles

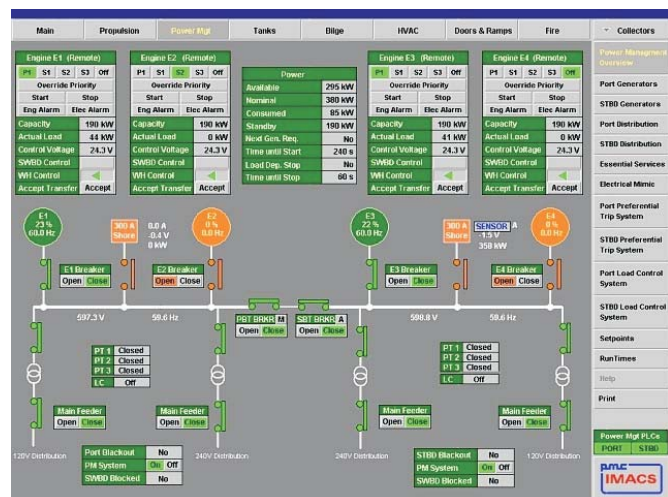
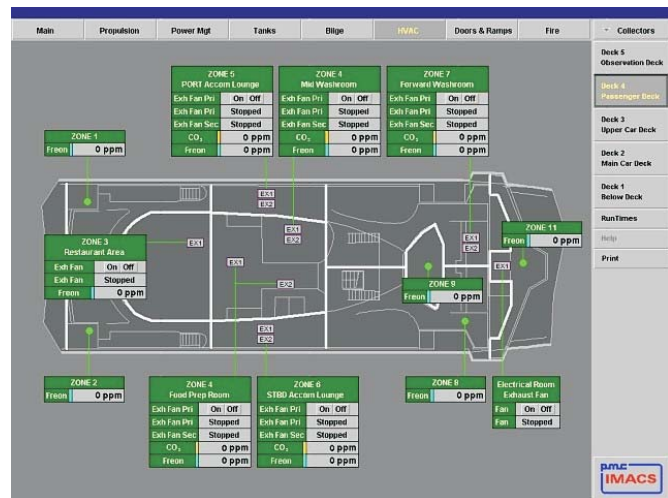
Navigation Light Panel

PMC's integrated bridge team designed and manufactured the operator control consoles for the bridge, three for vessel navigation and one for vessel engineering. Primary navigation control is from a two seat operator console located on the vessel center line. A control console is located on each bridge wing for docking and close quarter maneuvering. Aft of the main navigation control console is the Engineer's station. To meet unmanned engine room requirements, the engineer's console includes the Integrated Machinery Alarm and Control System (**IMACS**) with redundant workstations and a vessel wide CCTV monitoring station.

The PMC **IMACS** is a technically advanced Windows™ based graphical user interface for machinery alarm and control functions. Seamlessly integrated with PMC's *Omni Chief* distributed control and monitoring system hardware, the **IMACS** provides easy to use graphical displays for systems automation, safety systems, trending, health monitoring, power management, fire suppression, motor control and environmental control (HVAC).

The **IMACS** workstations and *Omni Chief* units, feature layered redundancy with a dual high speed network, functioning independently, without a centralized file server. The **IMACS** summarizes and networks all the data that is collected from electronically controlled systems throughout the vessel.

For more than three decades PMC has been a leading supplier of high quality control components and systems to the global market place. Our proven and reliable products can be found in service on all types of vessels and in challenging conditions throughout the world. PMC has more Integrated Alarm and Monitoring Systems in use on ferries operating in Alaskan waters than any other manufacturer.



### PRIME MOVER CONTROLS INC.

3600 GILMORE WAY, BURNABY B.C. CANADA V5G 4R8

TEL (604) 433-4644 FAX (604) 433-5570

www.pmc-controls.com